



Sir Geoffrey Leigh
Academy



Post-16
Prospectus



Attenborough College
Opening Minds to Success

Sir Geoffrey Leigh Academy is part of Leigh Academies Trust



Leigh Academies Trust is one of the country's largest and most established multi-academy trusts operating across Kent, Medway and South East London. It contains primary, secondary and special academies and is highly inclusive and successful. Our mission is to deliver "education for a better world" by ensuring that young people in our academies have an excellent start in life regardless of their background or ability.

Our Values

We care -
about our pupils and their families through our human scale approach to education, our staff and their well-being and the world around us, driven by our high ideals and strong moral values.

We have boundless ambition -
to achieve excellence for all and create confident young adults with high levels of resilience and integrity.

We work together -
as one team because we are greater than the sum of our parts. We foster an enterprising culture through global collaboration with partners in business and education.

We keep getting better -
using our 'can-do' attitude towards continuous improvement and innovation.

For admission enquiries telephone: 01322 620400
or email: attenboroughcollege@sgla.latrust.org.uk

'Students are proud to be part of Sir Geoffrey Leigh Academy... [they] are taught how to be resilient and respectful learners who are well prepared to take their place in a global community.'

Ofsted, 2023

Contents

Use our contents page to navigate your way through our prospectus

Welcome

About our college

Our expectations

Pathways of study

Entry requirements

Assessment

Onward destinations

IBCP Pathway

IBDP Pathway

T-Level Pathway

Our curriculum offer

Course Directory

Our full Course Directory can be found online at our website. Click the link below to access full information including entry requirements, assessment details and course summaries.

[View our courses](#)

Welcome

Opening Minds to Success

Post 16 is a thriving aspect of the life of Sir Geoffrey Leigh Academy, led by a dedicated team of staff, all sharing the same determination to open doors for the young adults in our care.

We believe that our role is to help students to become the best versions of themselves and, in so doing, to ensure that they are ready to enter further education, an apprenticeship or employment.

We also provide one of the widest choices of courses of any school in the area. We offer a variety of academic and vocational programmes in the form of International Baccalaureate Diplomas, BTEC and T Levels. Students can combine qualification types in a way that few schools allow but which provide students the opportunity to demonstrate that they have the knowledge, skills and behaviours valued by universities and employers.

Attenborough College sits at the heart of Sir Geoffrey Leigh Academy, where students have access to exclusive study spaces and kitchen facilities. As a member of Attenborough College, students receive pastoral support, via form tutors, dedicated student support managers and a coordinator of learning, led by the Director of Post 16.

Students have regular access to careers and further education guidance to support them in making future decisions beyond Attenborough College: 'UPP' (University Preparation Programme) and 'PEAP' (Preparing for Employment and Apprenticeships Programme), which combine face to face guidance sessions, visits to higher education and employment fairs and guided support.



About our college

Our unique and versatile curriculum is designed to facilitate students onto their next steps: university, apprenticeships or employment, whilst appreciating the local, national and international contexts. Students will gain work experience and can undertake paid part time work around their studies. We encourage students to find balance between the different aspects of their lives by teaching them the personal and professional skills they need for future success. Our students are supported to develop an open-minded, flexible and adaptable mindset that enables them to embrace challenges positively. All of our Post 16 students are provided with Chromebooks to use at home and in school throughout their two-year programmes.

It is our ambition for all students to become leaders who contribute to academy life. Our Student Leadership Team guides the direction and provision for students throughout the academy, leading on key themes of equality, diversity and inclusion. These positions of responsibility make a significant difference to the lives of others within the academy, help our students stand out from the crowd prepare them to be ready for the future.

In everything we do, our mission is simple, to “open minds to success”.

[Back to Contents](#)

Our expectations

We have high expectations of our Post-16 students and reflect these standards in the concept of being on **PARADE** throughout their time with us. By this, we mean that we expect:

P

excellent **PUNCTUALITY**

A

excellent **ATTENDANCE**

R

ROLE MODELLING to younger students

A

a positive **ATTITUDE TO LEARNING**

D

compliance with the **DRESS CODE**

E

adherence to the principle of **EQUALITY**

Pathways of study

We offer the prestigious International Baccalaureate Careers Related Programme, an Academic pathway to include Higher Level International Diplomas and/or A Level maths. Our vocational offer includes BTECs and T Levels.

These different types of qualification are graded differently but the broad comparisons can be seen below:

A Level course	Higher Level IB Diploma course	BTEC National Extended Certificate
A*	7	Distinction*
A	6	Distinction
B	5	Merit
C	4	Pass
D	3	
E	2	
	1	

A T Level is a complete qualification equivalent to 3 A levels.

T Level overall grade	A level equivalent grades
Distinction*	A* A* A*
Distinction	AAA
Merit	BBB
Pass - C or above on core section	CCC
Pass - D or E on core section	DDD

Grades C/4/Pass are considered 'good' passes for progression to employment, apprenticeships and higher education.

Students at Sir Geoffrey Leigh Academy have the option of four pathways combining IB Higher Level academic subjects and vocational qualifications. Alternatively students can study one of our T Level courses as a complete qualification.

It is our ambition to facilitate a coherent curriculum to guide students to future destinations of their choice.

Entry requirements

The minimum entry requirements to become a Post 16 student at Sir Geoffrey Leigh Academy are five GCSE passes graded at grade 4 or higher, including English Language and Maths. However, many subjects have higher entry requirements than this or require students to have studied the subject at GCSE, so please read each subject's entry requirements carefully.

It is a government requirement that students repeat GCSE English Language and/or Maths throughout Post 16, until they pass at grade 4 or higher, so we automatically enrol our students to do so and provide additional timetabled lessons to prepare them for re-examination. Our success rate with such students is well in excess of national averages.

Assessment

Higher Level IB diploma courses are examined at the end of Year 13, but all subjects contain a minimum of 20% coursework component.

A levels are generally between 80% and 100% terminally examined, with no more than 20% of the final mark acquired via coursework.

BTEC National Extended Certificates are examined on 40% of the course and the other 60% is completed via coursework.

T Level assessments include core exams alongside externally assessed components including an employer-set project which is a series of tasks completed within an exam window and occupational specialisms. Students complete a 45 day placement as part of the course which informs the overall grading.



Onward destinations

At least 75% of Post 16 students at Sir Geoffrey Leigh Academy gain entry to their first choice university each year, with the other 25% taking up either apprenticeship or employment.

We are confident that our unique curriculum offer enables our students to access the best universities, with the right level of commitment, dedication and study. Students on all pathways receive a reference from the school focusing on their commitment to the PARADE standards and their development of the Learner Profile characteristics.

‘High expectations of pupils’ behaviour and learning are embedded.’

Ofsted, 2023

IBCP Pathway

The IB Career-related Programme (IBCP)

© International
Baccalaureate
Organisation 2018



The Career-related Programme (IBCP) is designed for pupils aged 16-19 and is one of four programmes offered by the International Baccalaureate Organisation (IBO).

As an IB World School, authorised to deliver the IBCP, we are excited to offer Post-16 students the opportunity to follow this internationally recognised and valued suite of qualifications.

IBCP students become inquiring, knowledgeable, critical and creative thinking, communicative, principled, open-minded, caring, risk-taking, balanced and reflective adults.

These attributes make people more employable, more valuable to universities and more beneficial to society.



Key Points

By studying the full IBCP pathway, students are completing the equivalent of at least 3 A Levels, with further UCAS points awarded for their completion of the Reflective Project.

To follow this pathway, students must take a specific combination of qualifications*:

One vocational course (4 hours per week)



Two IB diploma courses (2 x 4 hours per week)



Core Programme (4 hours per week):

- Personal and Professional Skills (developing the skills needed to thrive at university, in the workplace and in life)

- Reflective Project (a 1500 word essay on an ethical issue within the vocational subject, which is rewarded with additional UCAS points)
- Service Learning (50 hours of voluntary service across one calendar year)
- Language Development (learning about Japanese culture and some basic Japanese language)

* Students may opt to take A level Mathematics as an additional 4th subject, if they meet the entry requirement.

Contact

Sophie Dickinson
sophie.dickinson@sgla.latrust.org.uk

IBDP Pathway

The IB Diploma Programme (IBDP)

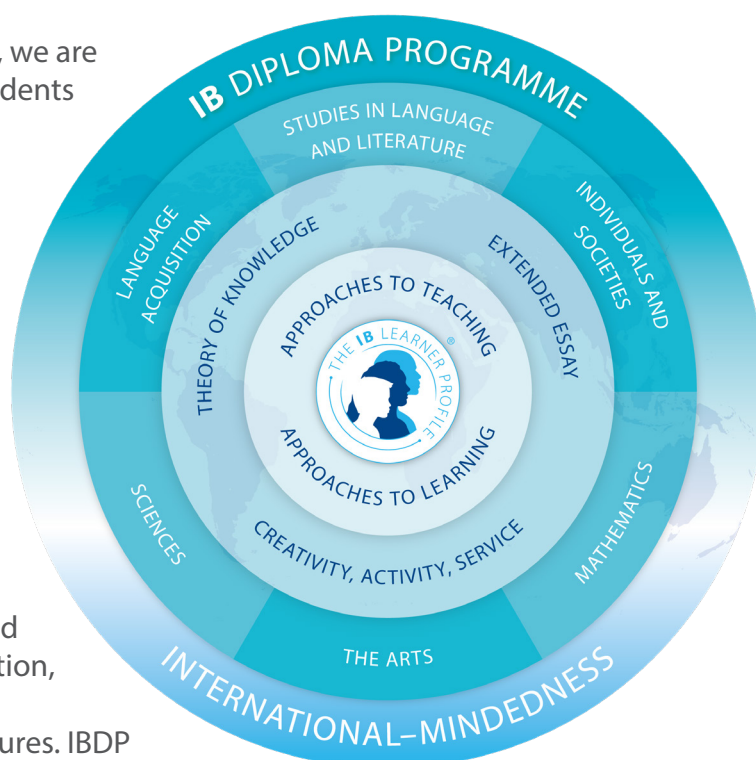
© International
Baccalaureate
Organisation 2018



The IB Diploma Programme (DP) is an academically challenging and balanced programme of education with final examinations that prepares students, aged 16 to 19, for success at university and life beyond.

Following our success with the IBCP Pathway, we are looking to offer the IBDP as a pathway for students achieving 5 x grades 9-6. The Diploma Programme prepares students for effective participation in a rapidly evolving and increasingly global society as they develop physically, intellectually, emotionally and ethically.

Students acquire breadth and depth of knowledge and understanding, studying courses from six subject groups, including English, maths, humanities, the sciences and a modern foreign language, with the option of studying a subject from the arts. They will not only develop the knowledge and skills that will prepare them for higher education, but by studying a foreign language, they will increase their understanding of different cultures. IBDP students make connections across traditional academic disciplines and explore the nature of knowledge through the programme's unique theory of knowledge course. They also undertake in-depth research projects in an area of interest through the extended essay. Students enhance their personal and interpersonal development through creativity, activity and service.



Key Points

- For IBDP students, a grade 7 at HL is the highest grade and is equivalent to an A* at A Level.
- Studies show both universities and employers rate students who have studied the IB higher on university-readiness and career-preparedness, respectively.
- The Extended Essay and Theory of Knowledge components means a student studying the IBDP will be more likely to gain admission into University than a peer who achieves the equivalent grades at A Level. For example: according to the DfE, 45 points (the maximum mark available for the IBDP) is equivalent to 5 A* at A Level.

To follow this pathway, students must take 3 Higher Diplomas alongside 3 Standard diplomas. These are chosen across the following groups: English language and literature; a foreign language; humanities; sciences; mathematics and the arts.



Core Programme

- **Extended Essay:** this asks students to engage in independent research through an in-depth study of a question likely relating to one of the DP subjects they are studying, supported by an expert supervisor.

Contact

Sophie Dickinson

sophie.dickinson@spla.trust.org.uk

- **Theory of Knowledge:** this develops a coherent approach to learning that unifies the academic disciplines. Within this course, students develop their critical thinking skills, and inquire into the nature of knowing and deepen their understanding of knowledge.
- **Creativity, Activity, Service: CAS** engages students in a range of activities alongside their academic studies throughout the Diploma Programme. The three strands of CAS enhance students' personal and interpersonal development through practical learning and enable journeys of self-discovery.

Sir Geoffrey Leigh Academy is a Candidate School* for the Diploma Programme. This school is pursuing authorisation as an IB World School. These are schools that share a common philosophy—a commitment to high quality, challenging, international education that Sir Geoffrey Leigh Academy believes is important for our students.

**Only schools authorised by the IB Organisation can offer any of its four academic programmes: the Primary Years Programme (PYP), the Middle Years Programme (MYP), the Diploma Programme, or the Career-related Programme (CP). Candidate status gives no guarantee that authorisation will be granted. For further information about the IB and its programmes, visit www.ibo.org.*

'The curriculum prepares pupils well for the future. Regular careers education and advice shine a light on the various options open to them.'

Ofsted, 2023

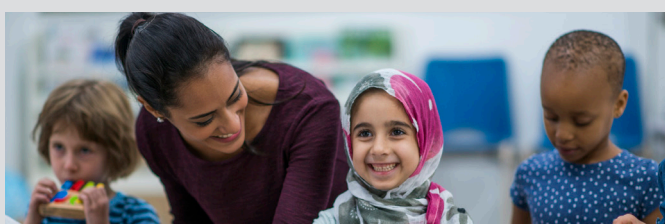


T-Level Pathway

T-LEVELS
THE NEXT LEVEL QUALIFICATION

KEY FACTS ABOUT T-LEVELS:

- Alternative to A Levels
- 21 weeks of work placements
- 80% study, 20% workplace
- Designed by and for employers
- One T-Level is equivalent to three A Levels
- A variety of progression options



Education and Early Years

Education and Early Years is a qualification worth three A Levels that allows students to prepare for employment, a higher level apprenticeship or higher education. Students study a Core Component that is common to all T-Levels and acquire an Occupational Specialism as an Early Years Educator, working with children from birth to the age of five.

Benefits

- Minimum 21 weeks placement at a primary school and nursery across the two years
- You will receive a licence to practise on successful completion of the T Level
- Put your skills and knowledge from the classroom into practice in the placement setting
- Grow your confidence
- Learn transferable skills such as team-working and communication
- Improve your employability

Entry requirements

- 5+ GCSE 9-4 grades
- Either GCSE English Language or Maths at grade 4+ (but preferably both)

Business Management and Administration

Management and Administration is a qualification worth 3 A Levels that allows students to prepare for employment, a higher apprenticeship or university. During the 2-year programme, students will develop the core knowledge and skills that are needed for entry to a range of management and administration occupations.

This course is ideal for students seeking careers in office management, administration, human resources and project coordination.

Benefits

- Minimum 45 days placement across the two years
- Put your skills and knowledge from the classroom into practice in the placement setting
- Grow your confidence in project management
- Learn transferable skills such as team-working and communication
- Improve your employability

Our curriculum offer

1. We expect all students to study at least three Level 3 qualifications. These may be Academic or Vocational or combine the two in the form of the International Baccalaureate Careers Programme. We also offer T Levels in Education and Early Years and Business Management and Administration. Students are also offered the opportunity to undertake the Extended Project Qualification (EPQ).
2. Students will be supported throughout their students through the academy's Core Programme which develops their personal and professional skills development, including critical thinking and communication. The tutor programme provides students with PSHE and careers support, including programmes that will support their applications to university and/or apprenticeships.
3. Each student will have Directed Study added to their timetables but this may be replaced with Home Study upon receipt of an excellent modular report.
4. Compulsory retake GCSE Maths and English Language lessons will be timetabled for students who have not achieved a grade 4.

Vocational	Professional	Academic	Academic +
GCSE: 5 x 9-4 (inc English or Maths)	GCSE: 5 x 9-4* (inc English and Maths)	GCSE: 5 x 9-5* (inc English and Maths)	GCSE: 5 x 9-6* (inc English and Maths)
<p>3 at Level 3: A suite of vocational qualifications (with the potential to include 1 IB Diploma).</p> <p>or</p> <p>1 x T Level qualification (worth 3 A Levels)</p> <p>Potential to add EPQ</p> <p>English/Maths GCSE resit</p>	<p>International Baccalaureate Careers Programme: A combination of Academic and Technical qualifications including:</p> <p>2 x IB Diplomas (H) 1 x technical qualification</p> <p>Students also complete the IBCP Core Programme</p>	<p>Students complete 3 academic qualifications.</p> <p>3 x IB Diplomas at Higher level.</p> <p>Potential to add EPQ</p>	<p>International Baccalaureate Diploma Programme: a broad suite of Academic qualifications including:</p> <p>3 IB Diplomas (Higher) 3 IB Diplomas (Standard)</p> <p>Students also complete the IBDP Core Programme</p>

* grade 6-7 in specific subject required for some IB Higher Diploma courses



Sir Geoffrey Leigh
Academy

Green Street Green Road
Dartford
DA1 1QE

t: 01322 620400
e: info@sgla.latrust.org.uk
w: sirgeoffreyleighacademy.org.uk

Attenborough College:
t: 01322 620439
e: post16admissions@sgla.latrust.org.uk



LEIGH
Academies Trust

Education for a better world

Chief Executive: Simon Beamish
BA (Hons) MSc PGCE NPQH NLE FCCT

Carnation Road, Strood, Rochester, Kent ME2 2SX
01634 412200 | fax: 01634 412201
info@latrust.org.uk | leighacademiestrust.org.uk

Leigh Academies Trust is a registered company
(company no 2336587) and an exempt charity.